

# Detecting Water Vapour Features from GEO Orbit

Convection Working Group  
19 May 2022

Xavier Calbet, Ján Kaňák, Martin Setvák

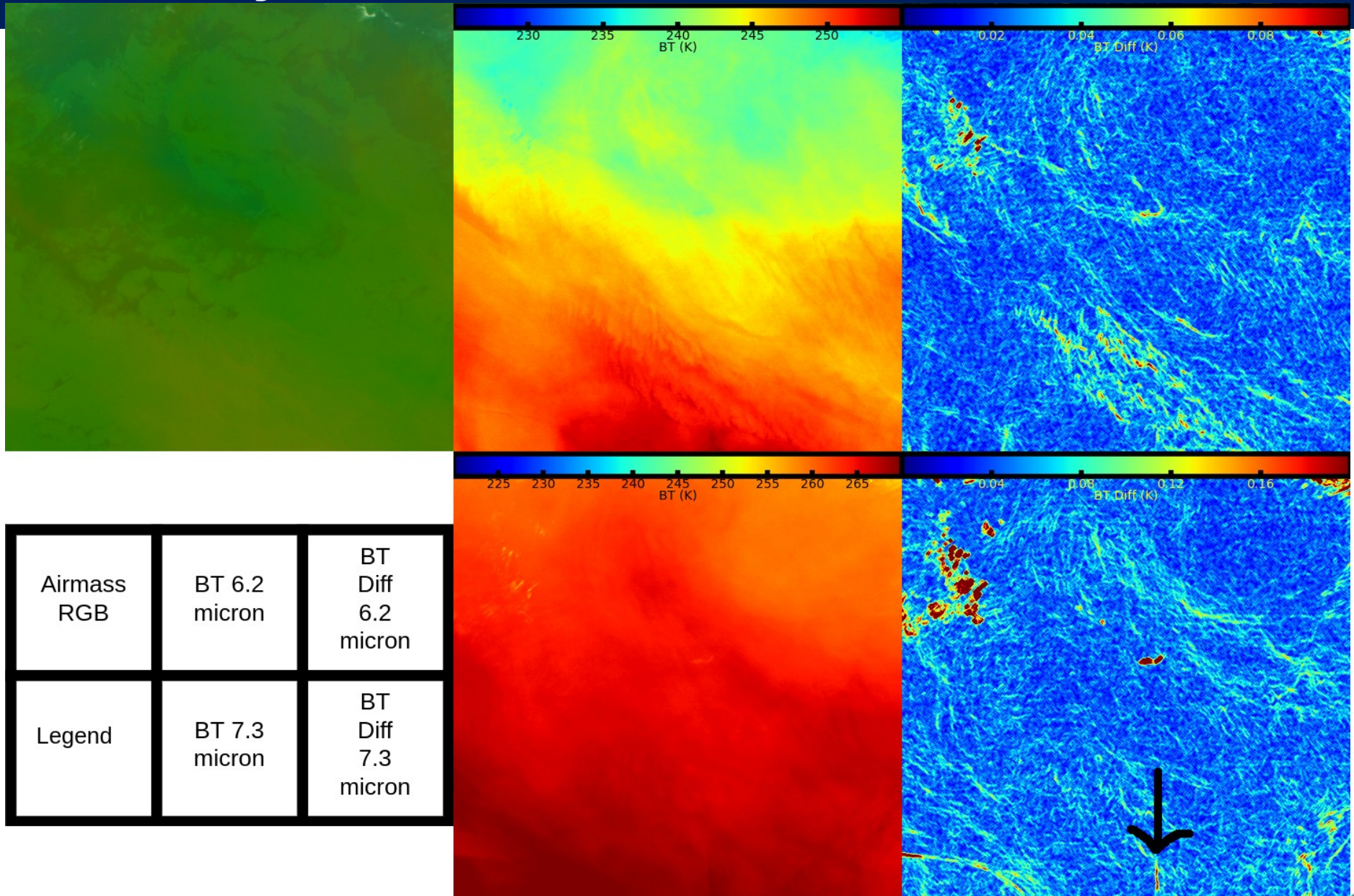


# Highlighting WV Features

- **Spatially:**
  - Via «STDV filter»
  - Other well known image edge detection algos
- **Temporally:**
  - Using the difference between one image and the next in time

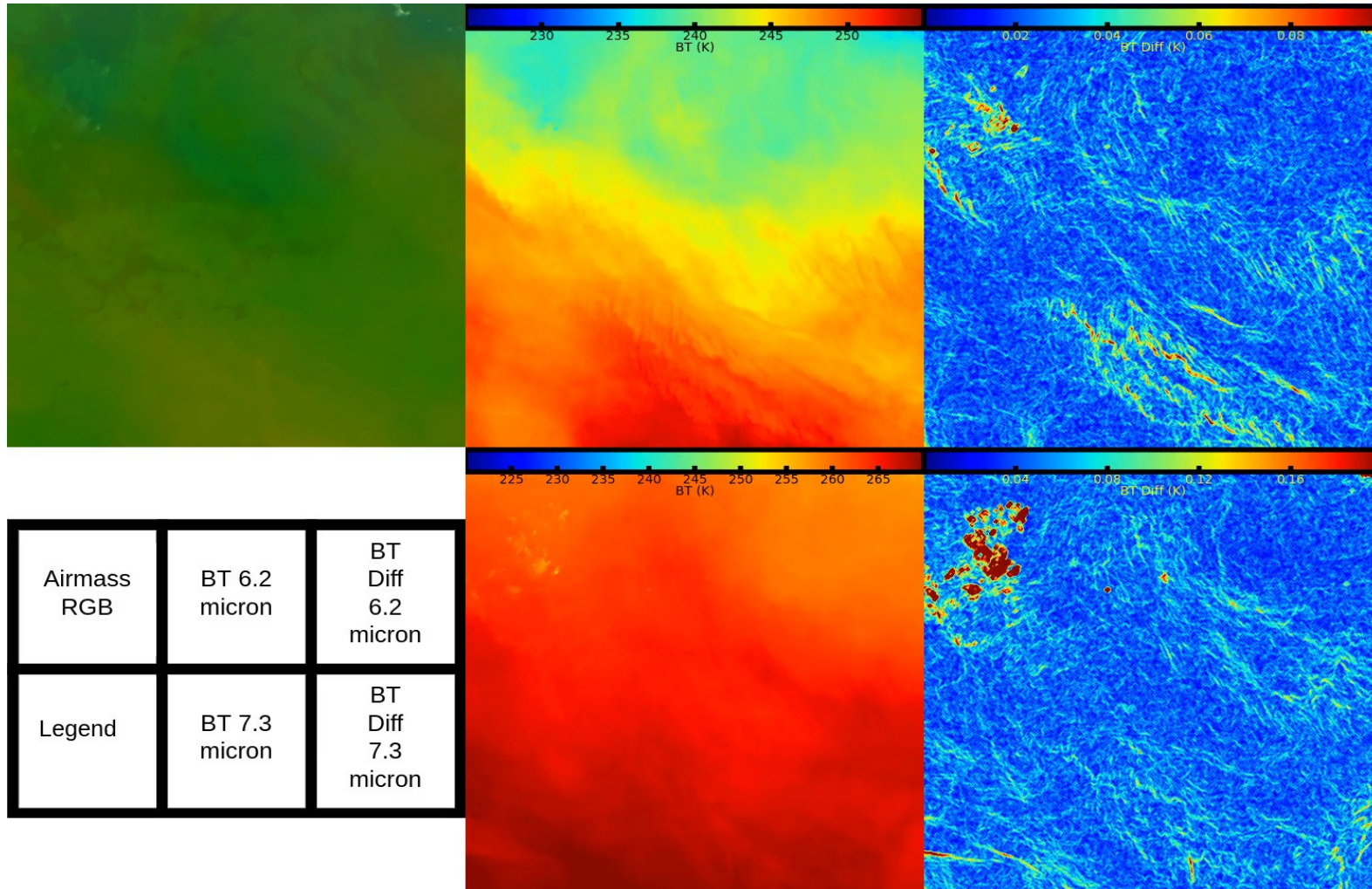


# Gravity Wave

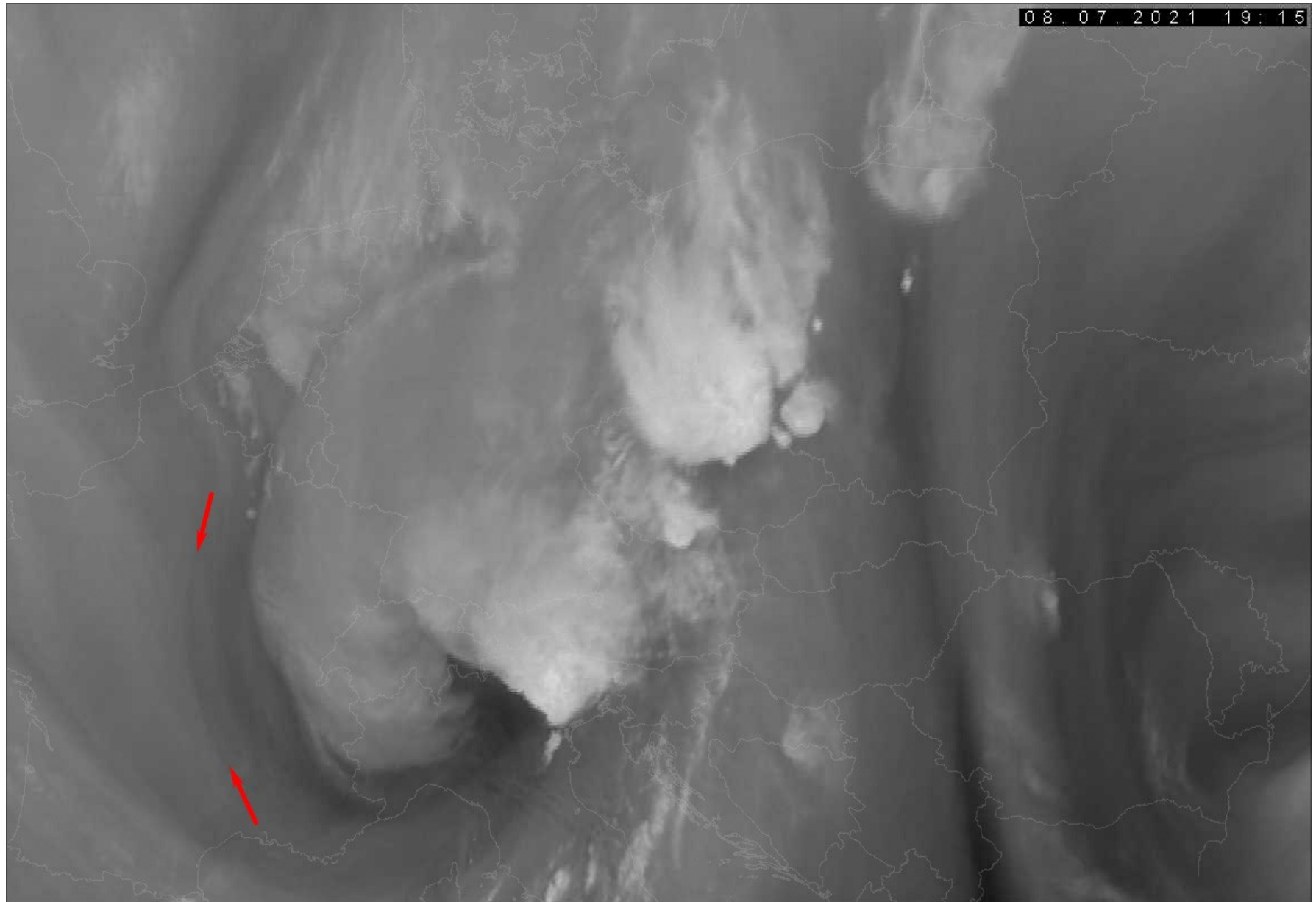




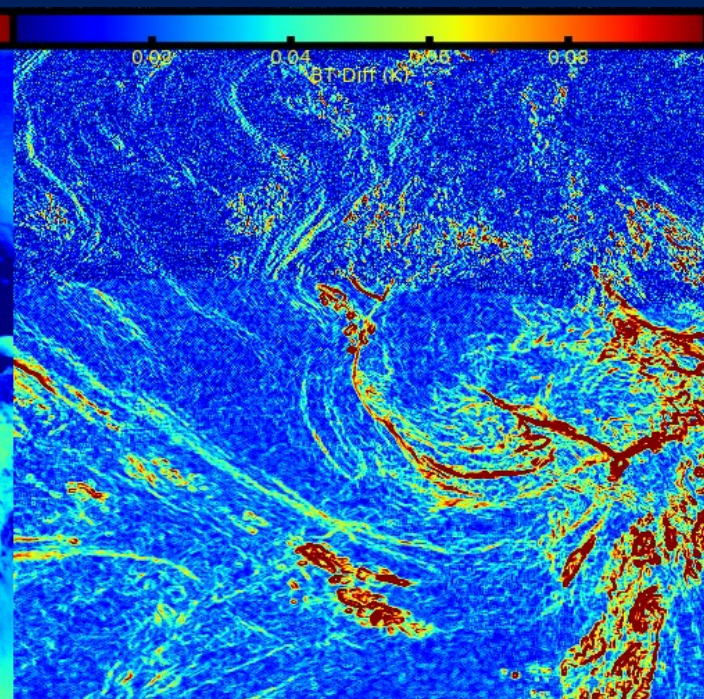
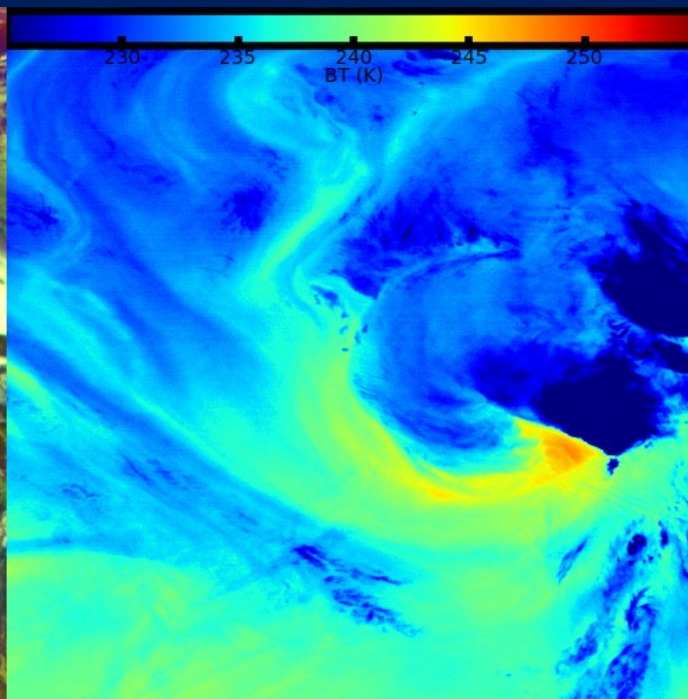
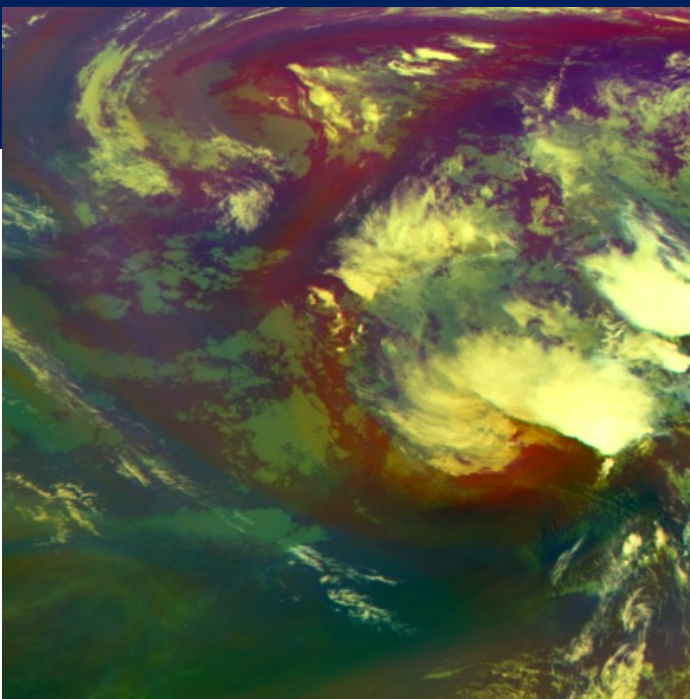
# Gravity Wave



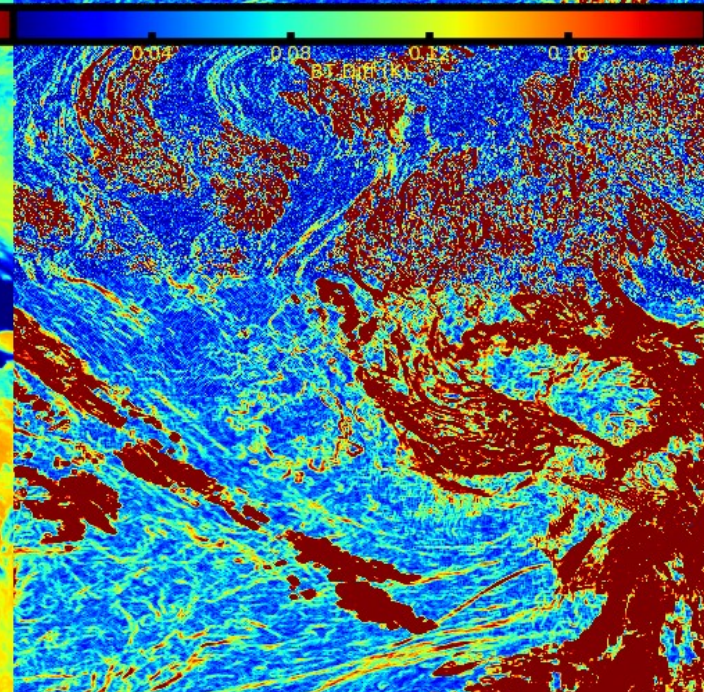
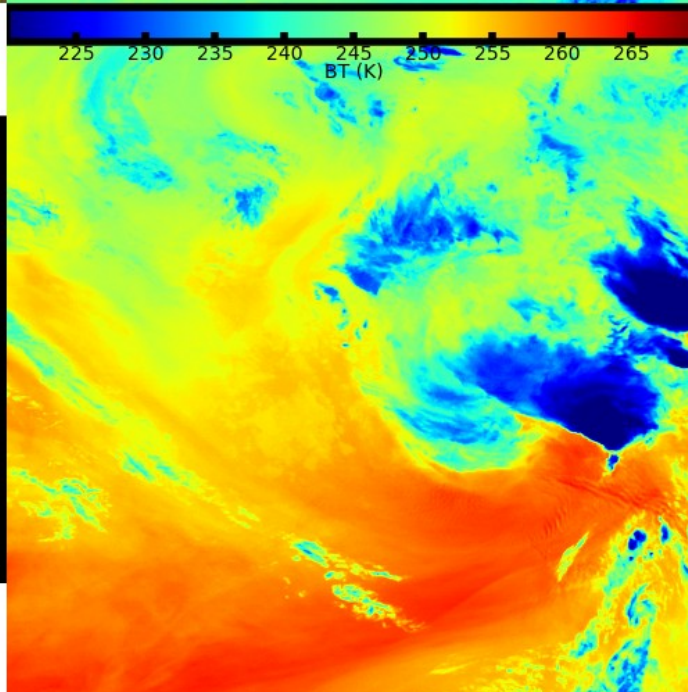
# Gravity Wave from Deep Convection





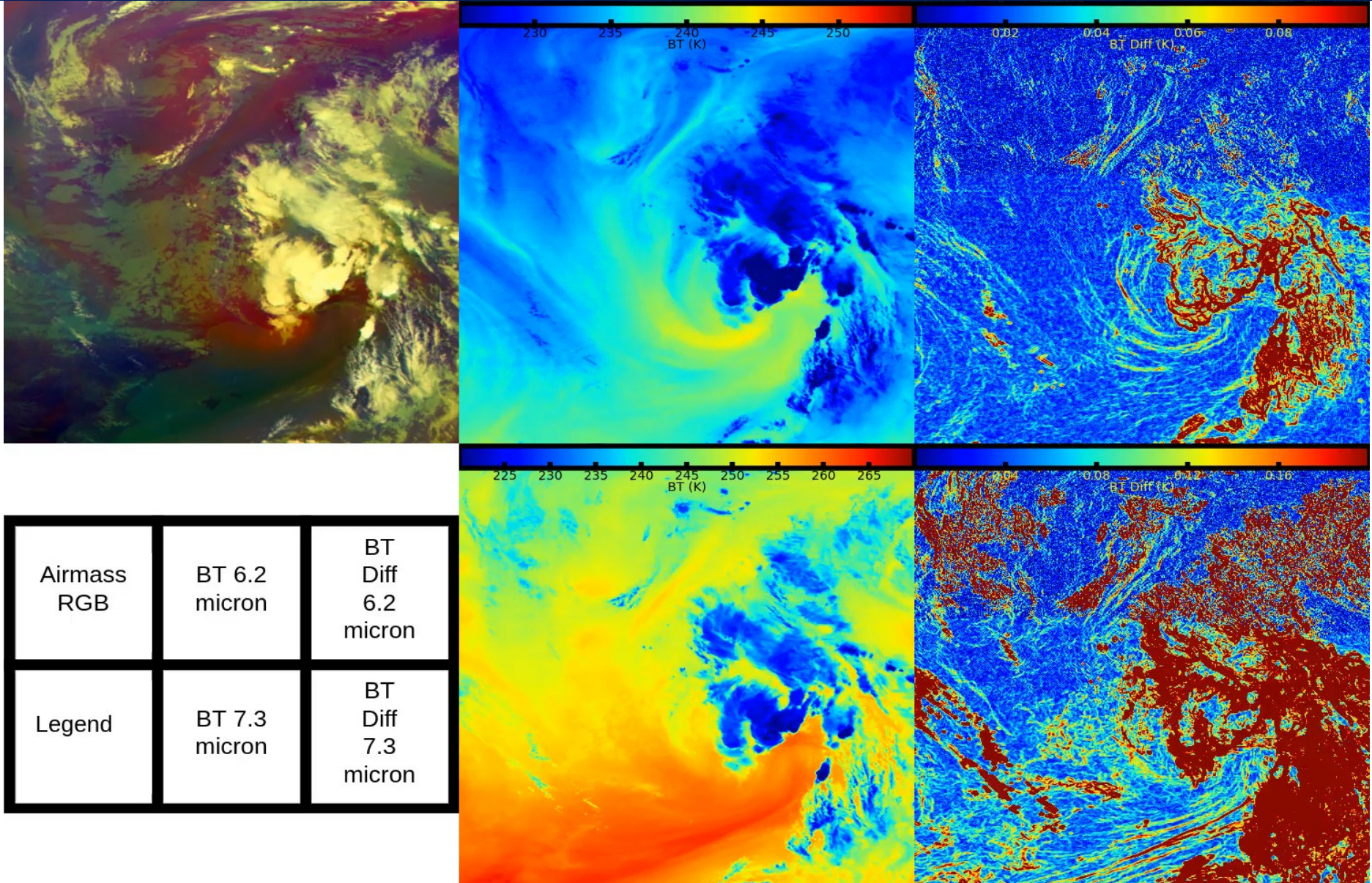


Airmass RGB	BT 6.2 micron	BT Diff 6.2 micron
Legend	BT 7.3 micron	BT Diff 7.3 micron



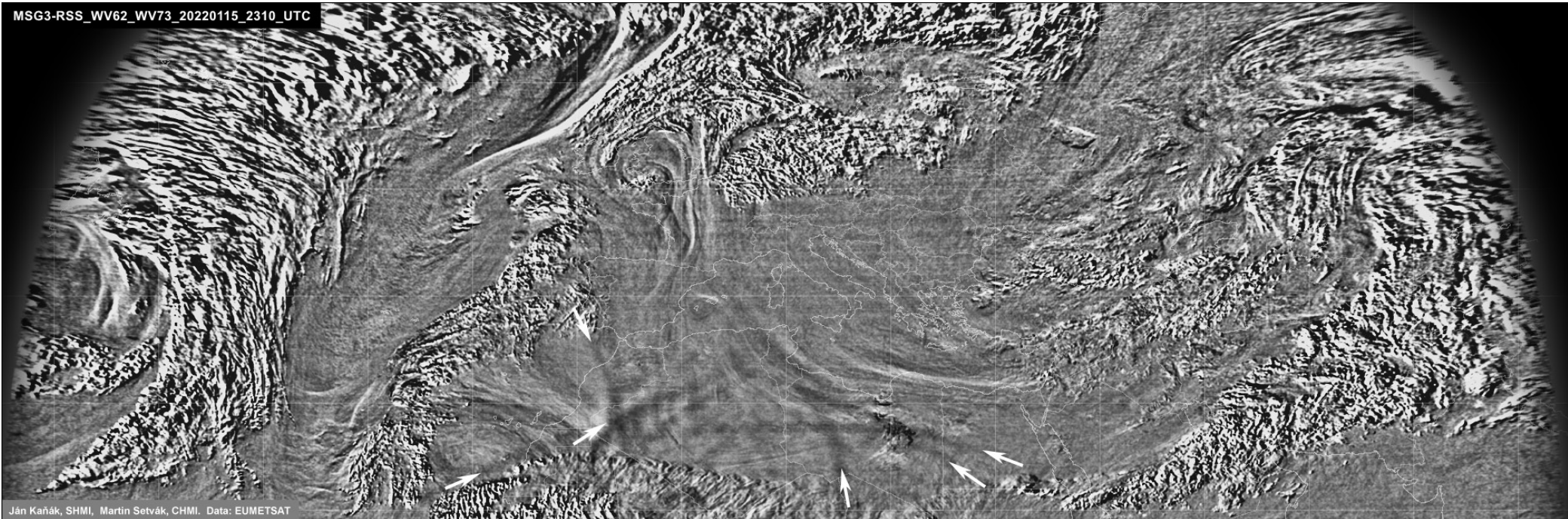


# Gravity Wave from Deep Convection



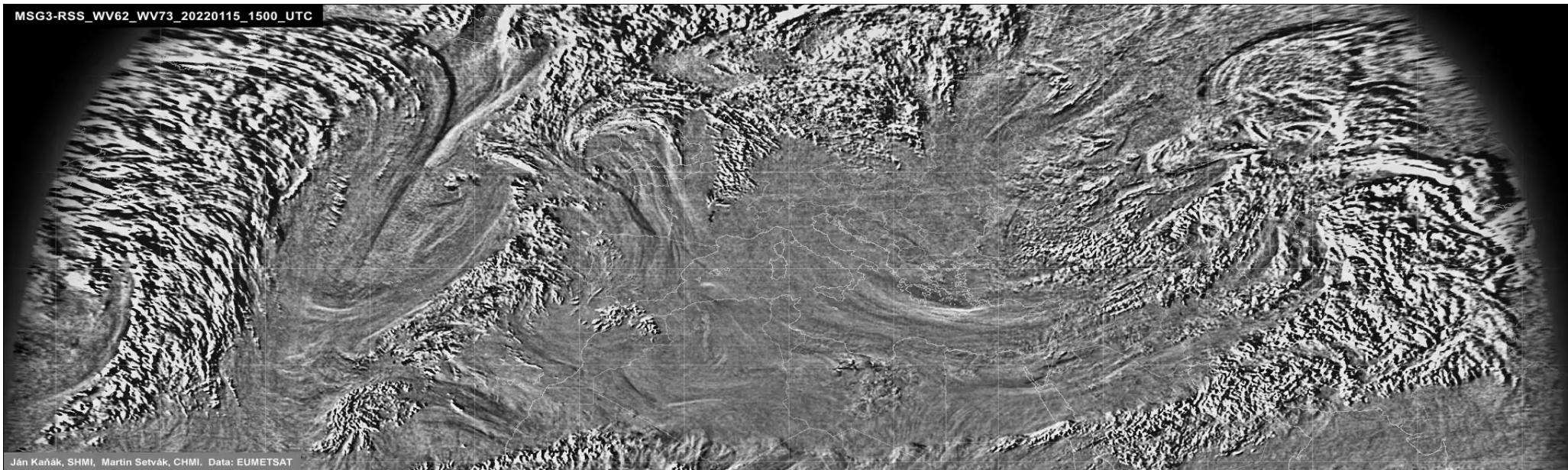


# Sound Wave from Hunga Tonga





# Sound Wave from Hunga Tonga



# Summary

- Gravity and other waves can be better detected in WV bands with edge detection or time differences techniques
- Can be a source of noise when detecting AMVs in WV images or MTG-IRS
- Level will be better determined with MTG-IRS